

from KloudPortal Portfolio

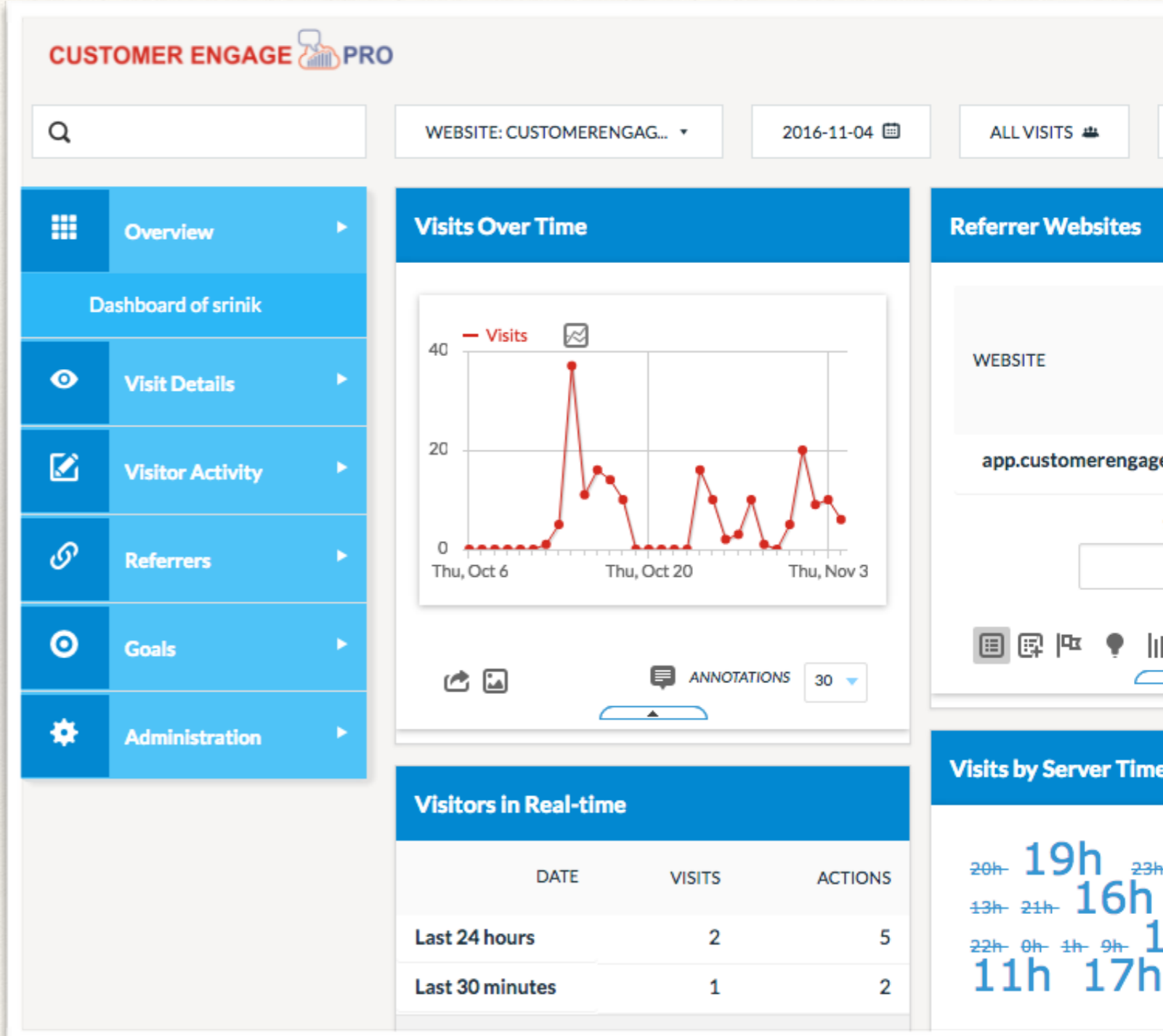
CUSTOMER ENGAGE  **PRO**

Analytics Data Driven
Decision Making

Your Customers, Your Leads, Your Data and Total Ownership of Your Data

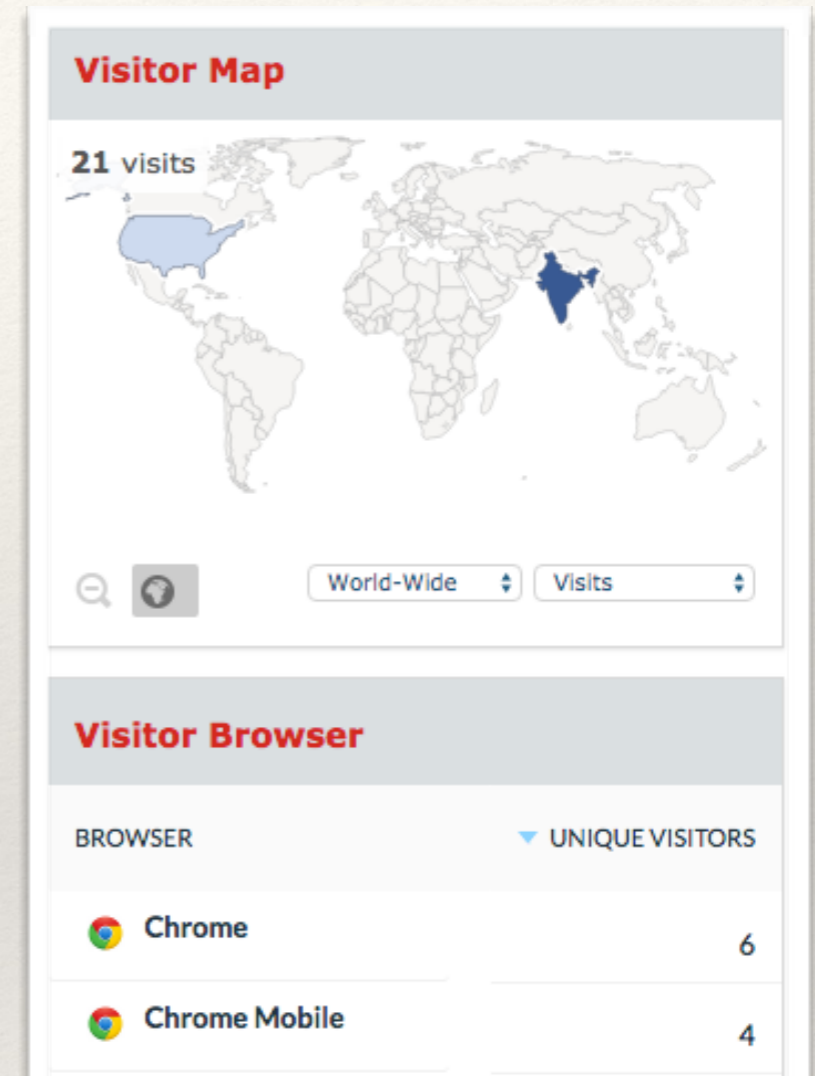
Features & Descriptions

- Complete Data Ownership
- User / Customer centric inSights
- Customisable and Extensible
- Watch Real Time Updates
- All Websites, Mobile Aggregated Dashboard
- Content Tracking
- Pages Transitions
- Site Speed & Page Speed Reports
- Traffic from Campaign & Search Engines
- Track by GeoLocation, Browser Type, Version, OS Version, OS Type
- Scheduled Reports through Email
- Track External Links, downloads, 404 Pages
- Customised Goals tracking for eCommerce, Online Sales, Digital Business



Next Generation Requirements

- ★ Manage the Unlimited Users, TimeZone Support
- ★ Manage the Unlimited Websites ,SubDomains & Mobile
- ★ Track through simple Annotations
- ★ REST Tracking API 's for customised needs
- ★ Java Tracking API Client, Android SDK, iOS SDK,Titanium SDK
- ★ Server logs of Apache , Nginx, IIS importing
- ★ Track server speed generation time for each Page View
- ★ Data Export API's
 - ★ Data Export in Excel, XML, JSON and more
 - ★ Fully Featured Analytics API
 - ★ Segmentation support in the API
 - ★ Administration API (REST) to create /update /delete pragmatically : Users API, WebSites API,Goals API etc
- ★ LogAnalytics API
 - ★ Keep your data private on your server
 - ★ Reprocess historical data from your server logfiles
 - ★ Report server errors and other http status codes



Magento | VirtueCart | SharePoint |
WordPress | Joomla | Drupal | Moodle |
PrestaShop | ZenCart | osCommerce |
OpenCart | Confluence | SonarQube | Jenkins
| PHP | Python | iOS SDK | Android SDK |
Appcelerator | C# | dJango | Ruby | NodeJS |
Microsoft Silverlight | GWT | Zend Framework
| Laravel | Angular JS | Objective C

Data Acquisition

- **Data Collection Flexibility:** Availability of different tracking mechanisms, hosting methods and custom variables / dimensions.
- **Data Ownership & Privacy:** Ownership of your data, compliance with international privacy legislation, data redundancy.
- **Data Processing, Connectivity & Openness:** Raw data access, streaming API of various information, and compatibility.
- **Reporting Features:** Comparison of reports, metrics and integrations in different web analytics solutions.
- **Flexibility, Limits & Customisation:** Number of actions, properties and goals along with data storage and white labelling options.
- **Deeper Insights:** Leverage the ip address info and MaxMind real time DB info. ISP info, Type of Customer, Location of Customer , postal code (US only), Income bracket (US Only)
- **Integrations:** What integrations can you get with Google Analytics, WebTrends, Adobe Analytics and Etracker?

Data Privacy

- ◎ **Do Not Track** : Availability of different tracking mechanisms, hosting methods and custom variables / dimensions.
- ◎ **Cookie based Opt-in** : Ownership of your data, compliance with international privacy legislation, data redundancy.
- ◎ **What We Capture Data**: Raw data access, streaming API of various information, and compatibility.
- ◎ **What We Derive from the Data**: Raw data access, streaming API of various information, and compatibility.
- ◎ **No Third party exchange**: Comparison of reports, metrics and integrations in different web analytics solutions.

How different we are ? Why can't Adobe Analytics, Google Analytics, WebTrends ?

- ✓  100% Data ownership
- ✓  Compliance with European data privacy regulations
- ✓  Recommended for Data sensitivity industries:
Banking ,Governments, Telecom,HealthCare
- ✓ Data Freshness 15mins - 24 hours
- ✓ Data Retention - Unlimited
- ✓  On Premise Hosting
- ✓ Unlimited number of collection variables & Customise the Tracking
- ✓ Ability to generate Fraud & Risk profiles of the visitors

Contact Us

Sign Up for Free and Experience the
Customer Insights - [Register](#)

Location:

KloudPortal Office
Plot No.32-34&39-41, ,
309, KTC ILLUMINATION
Image Hospital Road, Gafoor Nagar,
Madhapur, Hyderabad -500081
Contact Number: +91-92991-52641
Skype: kolluru81
Reach us :
Contact Number: +91-92991-52641

Reach us :

Contact Number: +91-92991-52641
Skype: kolluru81
contactus@customerengagepro.com